

Rowan University

Rowan Digital Works

Libraries Scholarship

University Libraries

1-6-2022

Information Literacy in the Age of Covid-19: Two Research Guides Implemented at Rowan University Libraries

Benjamin H. Saracco

Rowan University, saracco@rowan.edu

Andrea Baer

Rowan University, baera@rowan.edu

Daniel G. Kipnis

Rowan University, kipnisd@rowan.edu

Follow this and additional works at: https://rdw.rowan.edu/lib_scholarship



Part of the [Health Sciences and Medical Librarianship Commons](#), and the [Information Literacy Commons](#)

Recommended Citation

Saracco, Benjamin H.; Baer, Andrea; and Kipnis, Daniel G., "Information Literacy in the Age of Covid-19: Two Research Guides Implemented at Rowan University Libraries" (2022). Lightning talk presented at the New Jersey Academic Libraries Conference. Online. Libraries Scholarship. 31.

This Presentation is brought to you for free and open access by the University Libraries at Rowan Digital Works. It has been accepted for inclusion in Libraries Scholarship by an authorized administrator of Rowan Digital Works.



Information Literacy in the Age of Covid -19: Two Research Guides Implemented at Rowan University Libraries

Benjamin Saracco, MLS, MAIT
Andrea Baer, PhD
Daniel G. Kipnis, MSI

VALE Conference Jan 2022

Rowan University

https://rdw.rowan.edu/lib_scholarship/31/





Who we are

Benjamin Saracco, MLS, MAIT

- Research & Digital Services Faculty Librarian at the Cooper Medical School of Rowan, Camden, NJ

Andrea Baer, PhD, MIS

- History, Political Sciences and Journalism Faculty Librarian, Campbell Library, Rowan University, Glassboro, NJ

Daniel G. Kipnis, MSI

- Life Sciences Faculty Librarian, Campbell Library, Rowan University, Glassboro, NJ



Health and Information Literacy in an Interconnected World



"Spider's Web"
by [kndynt2099](#)
is licensed
under [CC BY-
NC 2.0](#)



Development of Local Source Evaluation Resources

July
2019

Evaluating Online Sources: A Toolkit

Strategies for evaluating online sources

⇒ <https://libguides.rowan.edu/EvaluatingOnlineSources>

Feb.
2020

Research Resources on 2019 Novel Coronavirus Disease (COVID-19): Welcome

Search this Guide

Search

The Rowan University Medical Libraries created this guide to authoritative information resources to support the health information needs of the investigators at schools of medicine and the Rowan University researchers at-large.

⇒ <https://rowanmed.libguides.com/covid19>

July
2021

COVID-19 and Misinformation

Resources and strategies for evaluating information on COVID-19.

⇒ https://libguides.rowan.edu/covid19_misinformation



Evaluating Online Sources: A Toolkit

<https://libguides.rowan.edu/EvaluatingOnlineSources>



[Campbell Library](#) / [Research Guides](#) / [Evaluating Online Sources: A Toolkit](#) / [Evaluating Online Sources: Initial Moves](#)

Evaluating Online Sources: A Toolkit

Strategies for evaluating online sources

Since July
2019

17,419
views

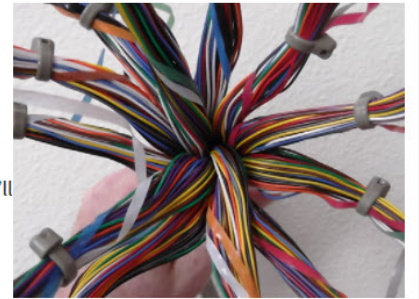
Evaluating Online Sources: Initial Moves

- [Evaluating Online Sources: Simple Strategies for Complex Thinking](#)
- [Click Restraint](#)
- [SIFT: Moves for Web Evaluation](#)
- [Four Moves of Fact-Checkers](#)
- [+ One Habit: Checking Your Emotions](#)
- [Why Lateral Reading?](#)
- [Lateral Reading in Action](#)
- [Quick Tips](#)

Evaluating Online Sources: Simple Strategies for Complex Thinking

The Internet allows people to create and to share information in ways that once seemed possible only in science fiction. At the same time that we can benefit from the open nature of the Internet, it's sometimes hard to decide what online information to trust and to use.

We'll offer some simple, evidence-based strategies for evaluating the credibility of online sources, as well as reading critically. More specifically, we'll teach you about "**lateral reading**," the practice of doing a quick initial evaluation of a website by spending little time on the website and more time reading what others say about the source or related issue. Lateral reading is used commonly by fact checkers.



These strategies will help you look beyond less important surface features of a web source (for example, how professional it looks or if it's a .org), and think more carefully about who is behind the source, what their purpose is, and how trustworthy and credible they are.


On this page we'll introduce you to several lateral reading strategies and concepts. On the guide's other pages (see the navigation menu) we'll share additional source evaluation strategies and learning resources.

Research Resources on 2019 Novel Coronavirus Disease (COVID-19)

<https://rowanmed.libguides.com/covid19>

Since Feb.
2020

3408
views

**Rowan University** | MEDICAL LIBRARIES

[Rowan University Libraries](#) / [Research Resources on 2019 Novel Coronavirus Disease \(COVID-19\)](#) / [Welcome](#)

Research Resources on 2019 Novel Coronavirus Disease (COVID-19): Welcome

The Rowan University Medical Libraries created this guide to authoritative information resources to support the health information needs of the investigators at schools of medicine and the Rowan University researchers at-large.

[Welcome](#) | [Patient & Consumer Information](#) | [Information for Health Professionals](#) | [Rowan University Libraries Resources](#) | [COVID-19 Situation Reports](#)

Welcome

This research guide was created to compile a list of known resources to help with the research and understanding of the recent outbreak of Coronavirus Disease 2019 (COVID-19) that was first detected in Wuhan City, Hubei Province, China.

If you are looking for general information about the virus provided by Rowan University, please visit: <https://www.rowan.edu/virusinfo>

This guide will only be used to centrally compile resources for general research information seeking. Sources featured on this guide are from vetted government organizations and high-quality health information databases provided by Rowan University Libraries electronic database subscriptions.

The guide is broken up into subject areas for ease in navigation:

- Patient & Consumer Information:
 - Patient information handouts
 - Links to Freely available health information

COVID-19 and Misinformation Guide

https://libguides.rowan.edu/covid19_misinformation



Rowan University

CAMPBELL LIBRARY

[Campbell Library](#) / [Research Guides](#) / [COVID-19 and Misinformation](#) / [COVID-19 and Misinformation: Top Tips](#)

COVID-19 and Misinformation

Resources and strategies for evaluating information on COVID-19.

COVID-19 and Misinformation: Top Tips

[Spotting Misinformation About COVID-19 and the Coronavirus](#)

[Evaluation Strategies](#)

[Fact-Checking Resources](#)

[Authoritative Health-Focused Sites](#)

[Further Reading](#)

[Evaluating Social Media Posts](#)

[Evaluating News Articles](#)

[Evaluating Scholarly Articles](#)

[Evaluating Online Sources Guide](#)

Spotting Misinformation About COVID-19 and the Coronavirus

Why a guide on Covid-19 and misinformation?

Every day there's new and sometimes conflicting information and research coming out about COVID-19 origins, prevention, symptoms, treatments, and potential cures or vaccines. Unfortunately, medical misinformation is spreading even faster. This issue has become great enough that the U.S. Surgeon General issued this advisory, [Confronting Health Misinformation: The U.S. Surgeon General's Advisory on Building a Healthy Information Environment](#). Sometimes, scientific studies are badly misinterpreted. At other times, information is more deceptive or blatantly wrong. Buying into misinformation could lead to dangerous consequences for your health and the health of your loved ones.

The next time someone shares a COVID-19 'fact' via text, social media, or clickbait, verify it before you share it! The tips can help you protect yourself from the COVID-19 infodemic



Guide structure

This first page includes key evaluation strategies and resources. The next three pages offer tips for evaluating information in particular source formats ([social media](#), [news articles](#), [scholarly articles](#)). Finally, [Evaluating Online Sources Guide](#) goes to a

Since Sept
2021

337 views



Your opportunity

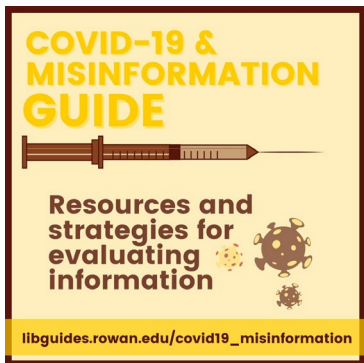


"share" by
mikecohen1872 is
licensed under CC
BY 2.0



Thank you

Questions?



Andrea Baer: baera@rowan.edu

Dan Kipnis: kipnisd@rowan.edu

Benjamin Saracco: saracco@rowan.edu

Copy of presentation slides:

https://rdw.rowan.edu/lib_scholarship/31/